

Fleet

Complete Platform for Your Vehicle and Transportation Management Needs





delivering fleet innovations

Big Impact. Delivered by a Team Who Gets It.

RouteMatch understands that today's government fleet managers are pressed to save money, improve safety and operate efficiently. Closely tracking and monitoring vehicles, assets, and people can be daunting.

RouteMatch is exclusively focused on providing powerful technology solutions to tackle such challenges. This includes a full suite of fleet utilization and optimization software applications, along with integrated peripheral hardware for dynamic decision-making.

More Control Over Your Fleet

RouteMatch Software has a deep history in advanced route planning, real-time vehicle location and monitoring, mobile data communication, and real-time business intelligence. Having successfully served over five hundred city, county, state, and federal government clients across North America and Australia, RouteMatch clearly understands the importance of experience, proper communication, and execution.



benefits that really matter

Visibility & Intelligence = More Productive Fleet

- Maintain and Manage Drivers, Fleets, Vehicles, and Assets
- Plan and Optimize Vehicle Routing
- Modify Driver Behavior & Improve Driver Safety
- Dispatch, Locate Vehicles, and Monitor Fleet Performance in Real-time *through automation, customizable data views, automated vehicle location (AVL) and geofencing*
- Conduct Vehicle Telematics and Prognostics *for engine health checks and monitoring idling, speeding, and emissions*
- Manage Incidents and Accidents
- Gain Access to Business Intelligence and Data Mining *including vehicle utilization, on-time performance, route history, event log, vehicle health, and speeding*
- Improve Customer Service through Real-time Predictive Arrival *smartphone applications, SMS text alerts, email alerts, web portals, and interactive voice response (IVR)*

Get There.

RouteMatch.com





advanced technology

RouteMatch uniquely integrates route optimization, advanced vehicle tracking and monitoring, engine diagnostics, and predictive arrival and departure algorithms to deliver an enterprise-class and seamless fleet management solution.

RouteMatch Fleet can be easily bundled with core modules and extended to support other peripheral and value-added RouteMatch products and modules.

Using open architecture and API integration tools, RouteMatch Fleet seamlessly fits into a city or county's enterprise Information Technology vision.

- Dynamic Route Planning and Schedule Optimization
- Integrated GIS and Smart Mapping
- Real-time Vehicle Tracking and Auditing
- Real-time Predictive Algorithms
- Seamless Mobile Data Systems for "Intelligent Vehicles"
- Mobile Applications for Driver Interaction and Messaging
- Smart Dispatching and Alert Engine
- Advanced Telematics Integration and Vehicle Health Monitoring
- Fleet and Route Management Business Intelligence Dashboards

a fresh approach to in-vehicle tracking

More than Vehicle Tracking

RouteMatch Fleet provides tools to manage the integration of on-board peripheral devices. Through our Tablet-based in-vehicle devices and our vehicle logic units, fleet managers can collect meaningful data such as GPS locations, vehicle health information, and vehicle motion details. This information is returned to RouteMatch's route management module, in real-time, and can be viewed by dispatchers. Automatic event alerts can be sent to warn drivers and supervisors of work violations through real-time messaging, SMS text messages, and email notifications. The information can be stored in the RouteMatch Data Warehouse for AVL playback, advanced reporting, business intelligence, and third party system integration.

Ruggedized Consumer Devices

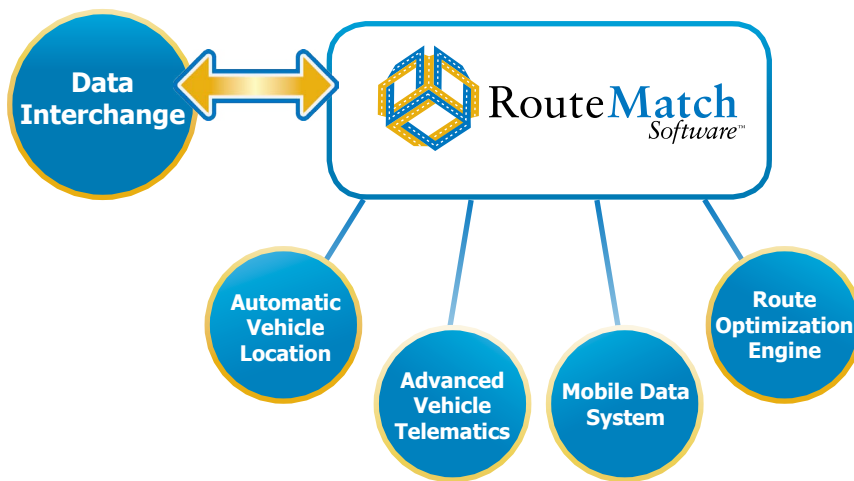
Smart Tablets that are More Affordable and Convenient

For significantly less than the price of traditional vehicle tracking devices or mobile data computers, RouteMatch empowers fleet professionals with ruggedized consumer devices featuring a variety of mounting options to match how your drivers use the devices and vehicle needs.

- Emergency Response Notifications
- Full driver to dispatch communications
- Vehicle navigation and route directions
- Route / Schedule Adherence feedback to supervisors
- Integrated work order management
- Vehicle inspection reporting



One Complete Fleet Management Platform



- Automatic Vehicle Location**
 - Maximize fleet utilization
 - Protect your mobile assets
 - Increase productivity
- Advanced Vehicle Telematics**
 - Fleet status and diagnostics
 - Prognosticate Vehicle Maintenance
 - Real-time vehicle health monitoring
- Mobile Data System**
 - Integrated workforce communication
 - Mobile manifests and work orders
 - Pre-trip vehicle inspection
 - In-vehicle navigation
- Route Optimization Engine**
 - Reduce costs
 - Optimal usage of fleet employees
 - Tailored to specific industry needs

What RouteMatch Fleet can do for you...

Your Job	Benefits
City and County Fleet Managers and Public Works Directors	<ul style="list-style-type: none"> → Manage entire fleet with one application. → Tie disparate systems together for greater value.
State Agency Fleet Managers	<ul style="list-style-type: none"> → Take state labor restrictions into consideration when optimizing driver work. → Improve vehicle safety with pre and post trip vehicle inspections.
Federal Fleet Managers	<ul style="list-style-type: none"> → Gain feedback on fleet usage for future planning and strategizing. → Consolidate reports to provide complete fleetwide transparency.
Utilities	<ul style="list-style-type: none"> → Access robust routing and navigation tools for fleet optimization. → Provide drivers with feedback through operator reports and driver scorecards.
Commercial Vehicle Operators (CVO)	<ul style="list-style-type: none"> → Maximize bottom line by minimizing costs and optimizing resources.

Achieve 10-20% Increase in Vehicle Utilization

return on investment



Save on Vehicle Operating Costs



Lower Fuel and Maintenance Costs



Reduce Labor Hours



Improve Safety



Improve Fleet and Route Accountability



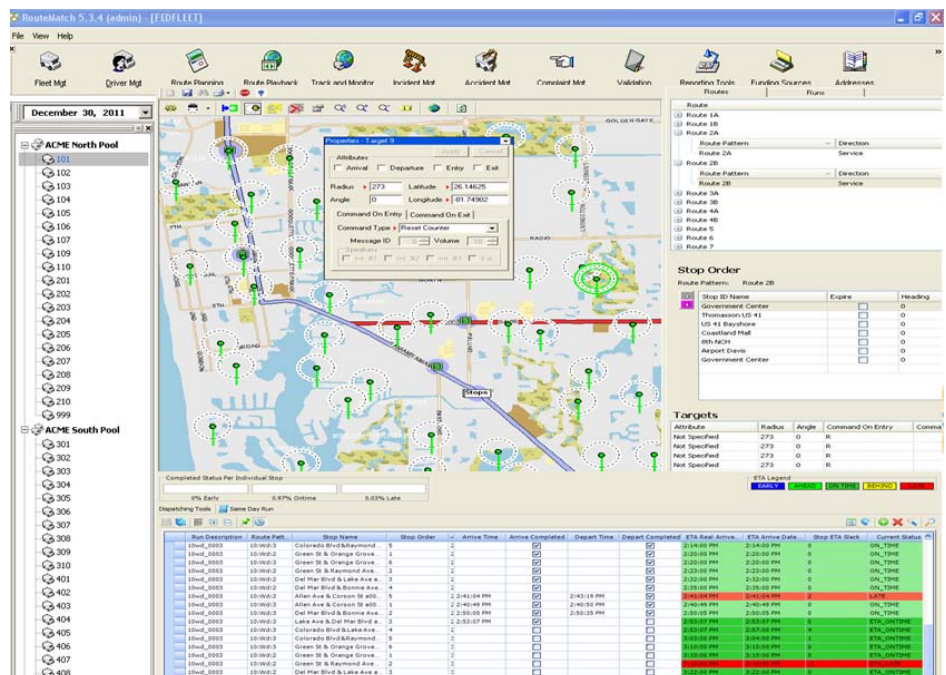
Boost Customer Service and Communication



Enhance Operational and Management Decision Making

“RouteMatch provides unprecedented access to valid data. We are now confident in our data and can see when our operations are running at any given time. Real-time data enables us to quickly respond to any situation and has helped improve overall customer satisfaction.”

*- Bryan Beck, Director,
Compliance and Customer
Relations, Kansas City Area
Transportation Authority*



Discover innovative technologies
for vehicle and passenger management.

RouteMatch.com

info@routematch.com

404.876.5160

